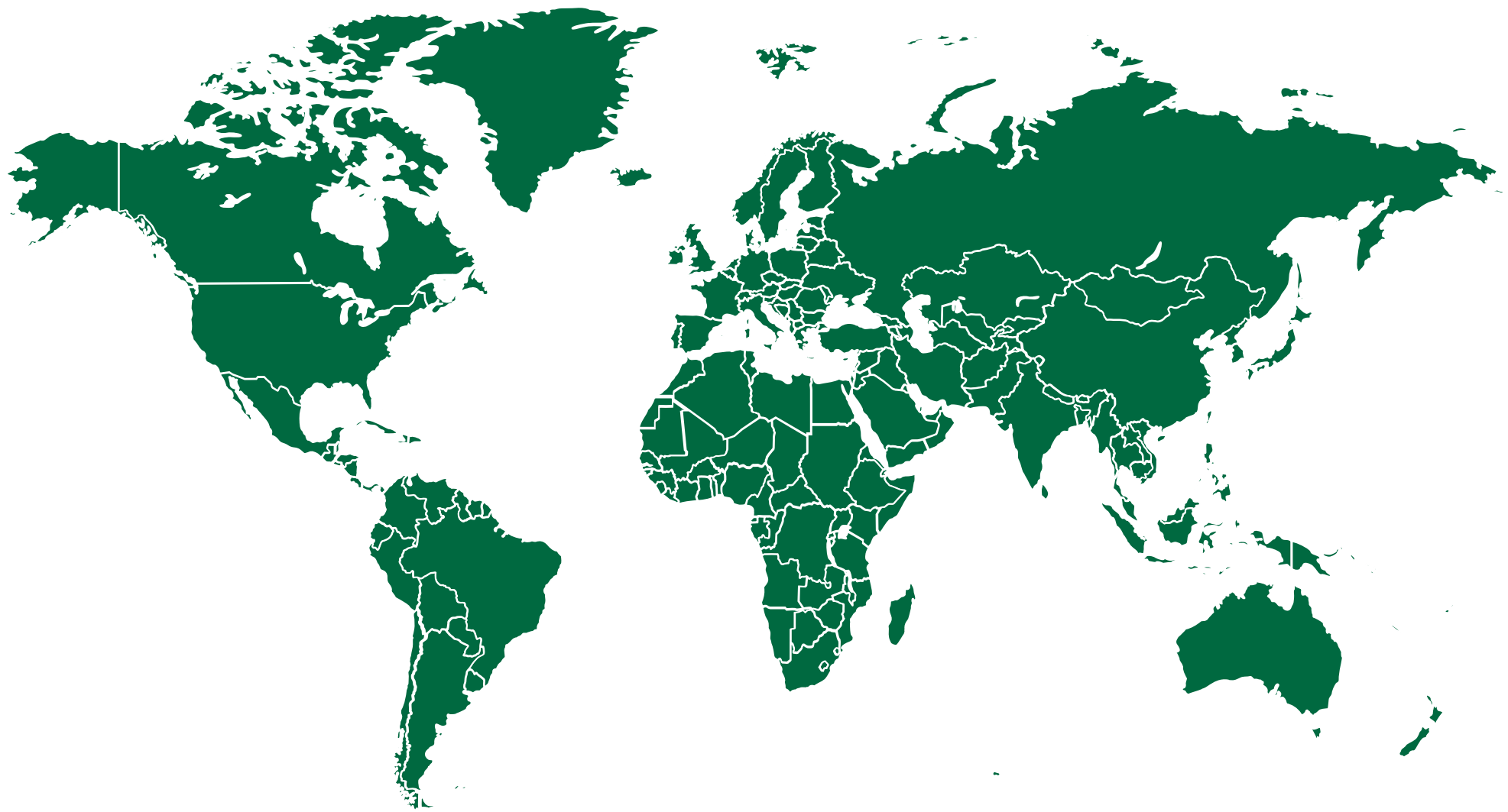




Gypsophila a universal
Love story



Gypsophila

A universal love story

With its stunning white brilliance and amazing versatility, Gypsophila has always played a central role in creating the perfect wedding event, whether this is a traditional chapel ceremony, a classic ballroom extravaganza or something altogether more avant garde.

This special catalog showcases the imaginative wedding creations of floral designers from Asia, North America, Europe, Latin America, Australia and the Middle East. Above all, it reminds us of the universal power of Gypsophila to cross oceans, languages and cultures, bringing love, purity and timeless romance to couples everywhere.

Join us on a spectacular journey of Gyp-inspired weddings from around the world. Bon voyage!





ECUADOR

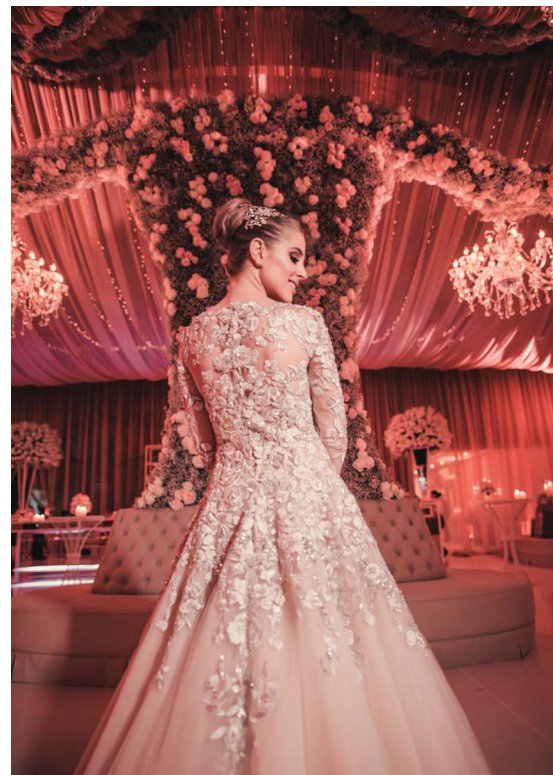
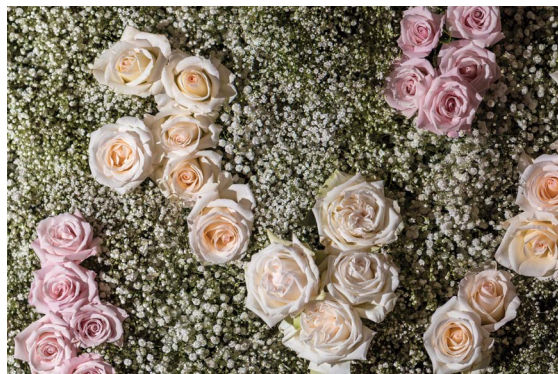
Heavenly creation

It takes Latin flair to dream up this lavish wedding hall, festooned with drapes and Gypsophila, that seem to explode like fireworks. Notice how the white XLENCE® soaks up the pinky hues of the surrounding, creating an ambience filled with romantic possibility. The designer has used Gypsophila in a variety of intriguing ways – integrated into the ceiling decoration, as a luxurious center piece and eye-catching table decoration. Together, the effect is mesmerizing.









Floral Designer: Cayetano Uribe and Mónica Sevilla, Cayetano Y Mónica Decoraciones.

Photographer: Raynner Alba, Cuanca. Manuela Ruiz, Quito. Adriana Ortiz and Christian.

Supplier:  **Florsani**
FLORICOLA SAN IBIDRO LABRADOR



GREAT BRITAIN

A tradition of purity

A chapel a stone's throw from the English coast. A summer wedding in the English countryside. You can taste the salt in the air.

Beautifully understated, Gypsophila is the perfect partner to complement the rustic charm of this wedding.

Elegant, meticulous and in perfect harmony with the surroundings.

A single, striking bouquet against the bare wood of the pews, a splash of purity in the bride's bouquet, and an arch of pure, exuberant Gypsophila, symbolizing the entrance of the newly wed couple into their new life together.







Floral Designer: Bev Halley, Halley Floral Design. **Photographer:** Dan Ward Photography.

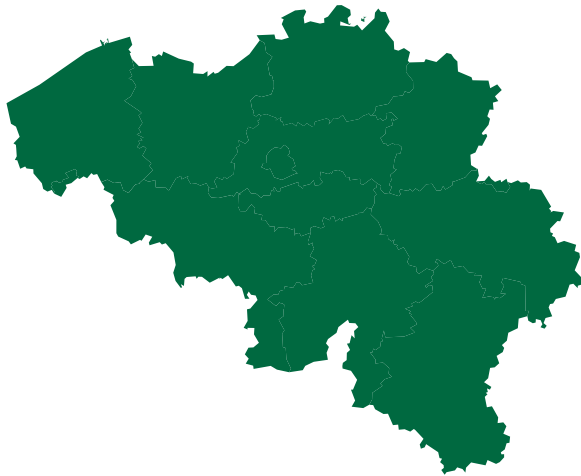
BELGIUM

Magical by day, enchanting by night

Family and friends gather for this relaxed, outdoor springtime wedding in Belgium.

During the daytime ceremony, delicate Gypsophila adds just the right touch of ornamentation - exuberant and romantic - yet always natural.

During the night-time festivities, Gypsophila pops up everywhere, painting the rustic venue with flashes of pure, unpretentious joy.

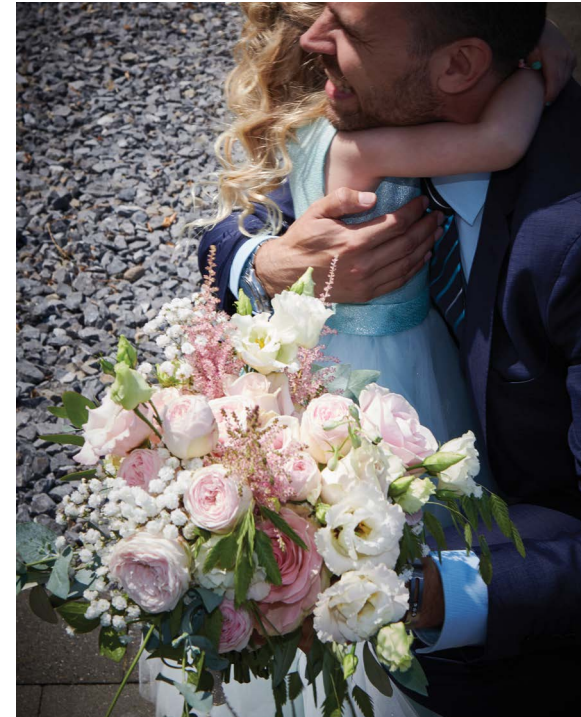










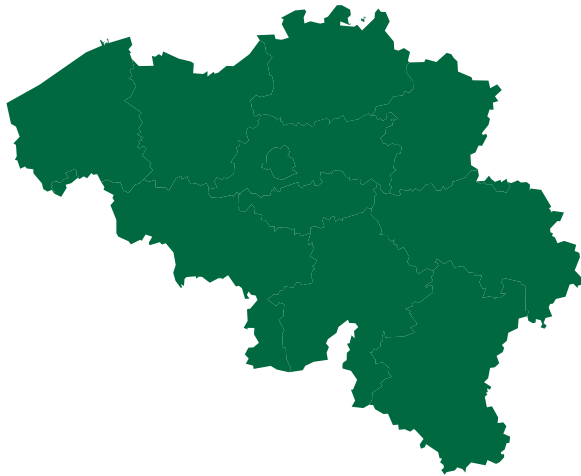


Floral Desinger: Regine Motmans. Photographer: Eric Greif. Supplier:  malima 25 1990

MORE FROM
BELGIUM

**One flower.
Limitless possibilities.**



In the hands of this Belgium designer, Gypsophila takes on exciting new forms: trendy hanging bouquets adorn the door of the bride and groom, while Gypsophila jewel-like white buds embellish a modern take on a classic bridal bouquet.









Floral Designer: Ness Klorofyl. Supplier:  



COLOMBIA

The purity and versatility of Gypsophila

Colombian wedding celebrations can often be extravagant fiesta-like celebrations lasting well into the early hours of the morning. In contrast, the heavenly qualities of Gypsophila are used in this Church ceremony to create a mood of family, serenity and sanctity. From the stunning floral arch that usher guests into the church, to the small clusters of Gypsophila placed along the aisle, to the angelic tiara worn by the little flower girl, the beautiful versatility of Gypsophila are fully on display.









Floral Designer: Leonel Triana. **Photographer:** Alejandro Callejas. **Supplier:** Gipsy Flowers





JAPAN

Elegant minimalism meets modern trends

Traditional Japanese wedding ceremonies tend to be very intimate affairs, with much attention given to the ritual symbolism of small details. In keeping with this, the designer has chosen to use Gypsophila, pure and clean in color, with an aesthetic of elegant minimalism, while taking advantage of Gypsophila's flexibility to create a trio of hanging bouquets that are unmistakably fresh and of the moment.



Floral Designer: Kazuyo Asayama. **Photographer:** Satoru Tokuda. **Supplier:** Sumika Agrotech.



CHINA

Many colors of Gyp for a customized arrangement

Among China's cosmopolitan set, today's wedding ceremonies mix both traditional and Western elements, creating a celebration that is customized to reflect the personal style of the couple.

When it comes to flowers, the emphasis is definitely on quality and customization rather than quantity. We can see this in the stunningly original bouquets created with full round flowers of tinted Gypsophila which perfectly compliment the couple's color theme.









Floral Designer: Wang Yijie, Huang Xiaoting, Xu Xiaofang. **Photographer:** Jin Xing, Tan Huoyin, Li Qingwei.



AUSTRALIA

A fairy-tale banquet of the imagination

The setting: A majestic wedding banquet.

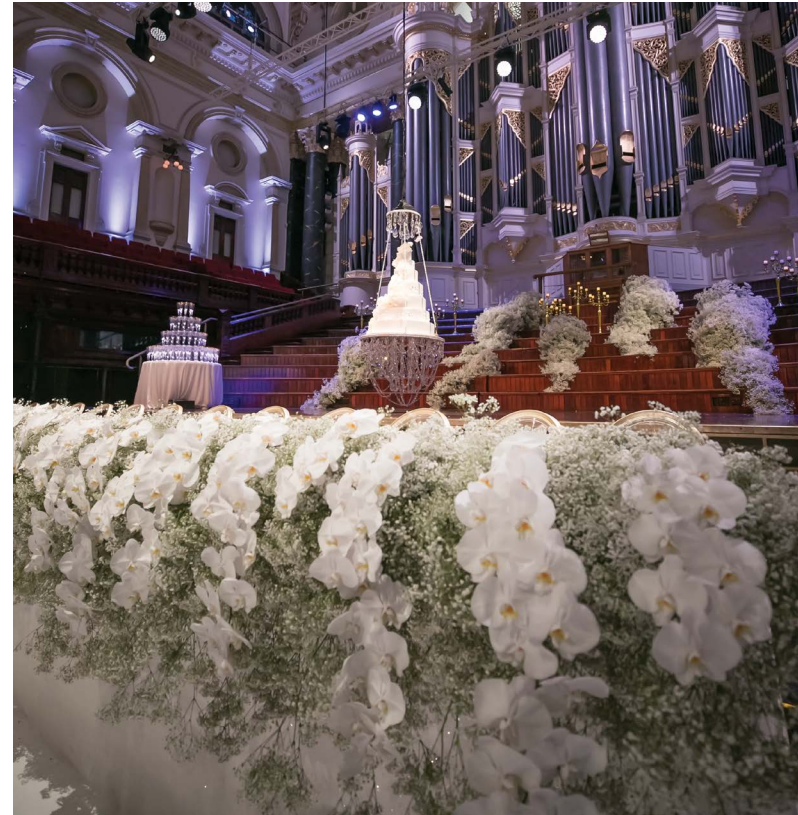
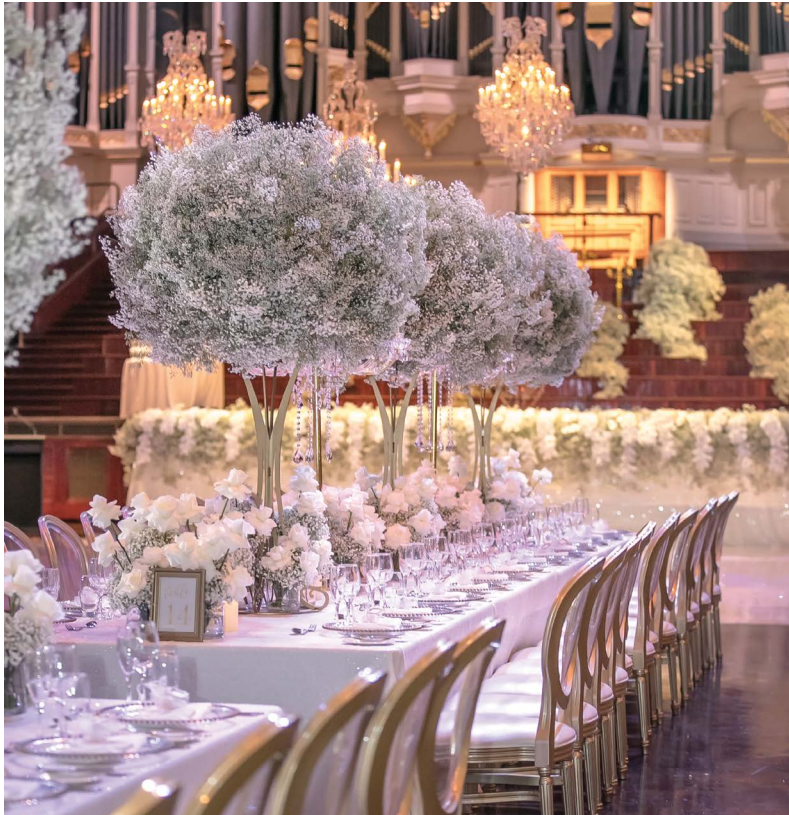
A spectacular arrangement of XLENCE® Gypsophila, orchids and white roses cascading down steps and balcony to create a symphony of movement and romance.

XLENCE® Gypsophila adorn the tables, creating an ocean of pure white - adding majesty and sophistication that amplifies the luxurious atmosphere.









Floral Designer: John Emanuel. Supplier:  **Florsani**
FLORICOLA SAN ISIDRO LABRADOR  **WAFEX**
World's finest flowers

RUSSIA

Add a touch of Cosmic Luxury to Your Wedding


The whitest of all, MY WHITE COSMIC™ has been paired perfectly with the shiny crystal, to bring a splash of celestial brightness and refined sophistication this luxurious wedding event.









Floral Designer: Samokhingwed and Tridvornova art-buro. **Photographer:** Alexandr Nozdrin. **Supplier:**  **MUCH**
FLOWERS



MORE FROM
RUSSIA

**Gyp's cosmic versatility
knows no bounds.**

Russian weddings are known for having an element of romantic fun woven into proceedings – from “ransoming” the bride to counting the length of the bridal kiss. This playfulness finds unique expression in the use of Gypsophila as a “fabric” from which to create the bridal gown. Not only does Gypsophila’s MY WHITE COSMIC™ whiteness lend brilliant purity to the traditional gown, but the unique features of the stems, which do not tangle or break, allow the designer to set their creativity free. The result is a masterpiece in floral wedding fashion.









Floral Designer: Natalia Zhizhko. Photographer: Olga Klimakhina. Supplier: **MUCH** FLOWERS



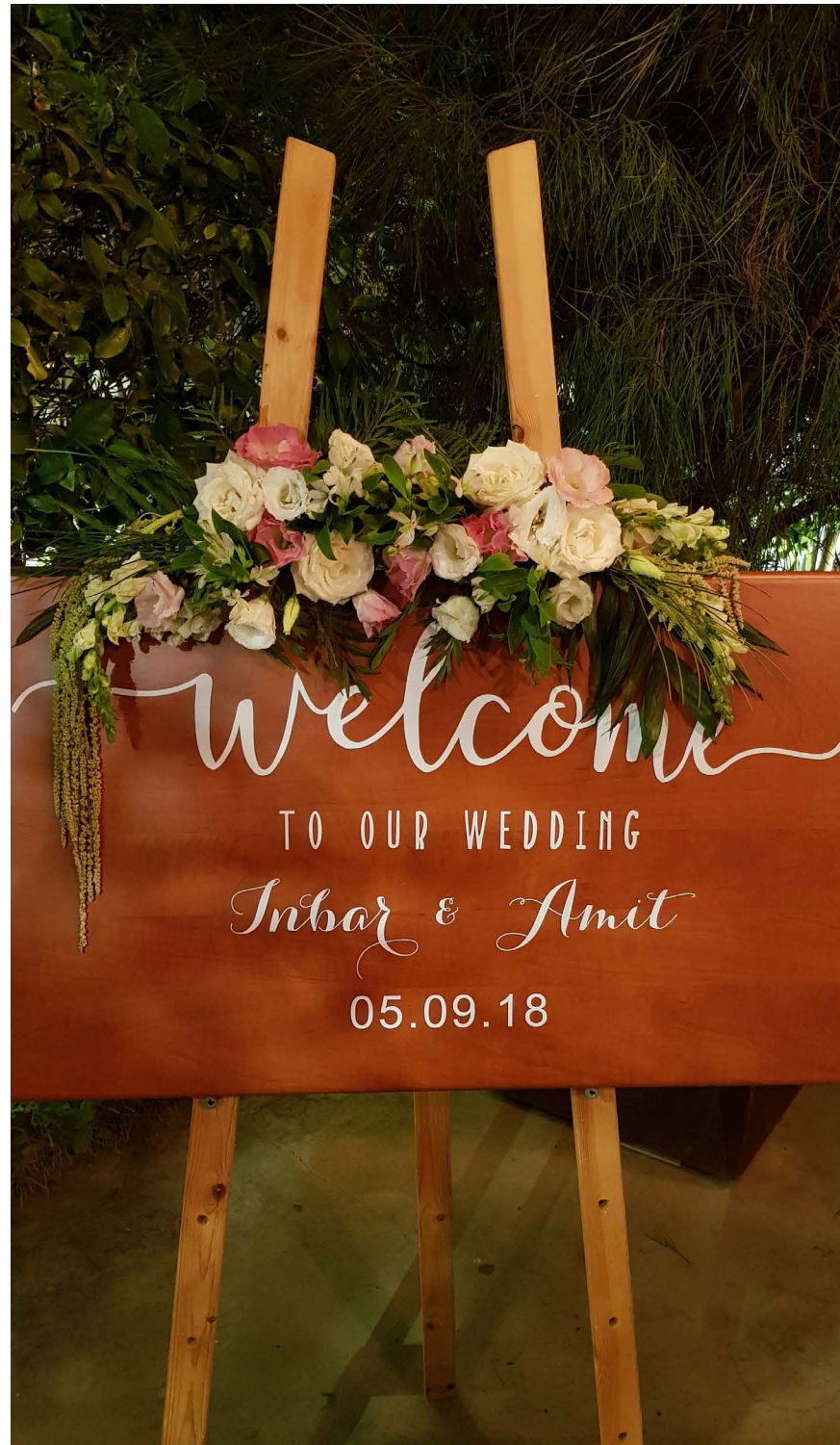
ISRAEL

A simple canopy becomes a radiant home of love

In this al fresco wedding ceremony in Israel, the bride and groom are married under a traditional Jewish canopy known as the “chuppah.” Symbolizing the home they will build together, the four pillars have been lavishly decorated with an abundance of pure white Gypsophila, transforming the canopy into a shimmering focal point of commitment and celebration. The Gypsophila theme is echoed in the seating arrangements, and in the table pieces.









Floral Desinger: Yaaruli Flowers Design. **Photographer:** Idan Hasson.



NETHERLANDS

Pretty in pink, naturally

A convertible white Beetle, adorned with a magnificent garland, is the perfect way to get the couple to the chapel on time.

In keeping with the romantic pastel coloring, the designer has opted for My PINK® Gypsophila - the only natural pink Gypsophila - to provide the perfect compliment to this classic look.







Floral Designer: Astrid Van Der Berg, Van Der Berg Greenhouse.



MORE FROM

NETHERLANDS

Something old, something new

Gypsophila strikes the right balance between retro and modern in this traditional/contemporary Dutch wedding.

Outside, Gypsophila is used to add snowy splendor to the bright red vintage car transporting the bride and groom, while indoors, coupled with white ribbons, it tastefully accents important elements of the nuptials.

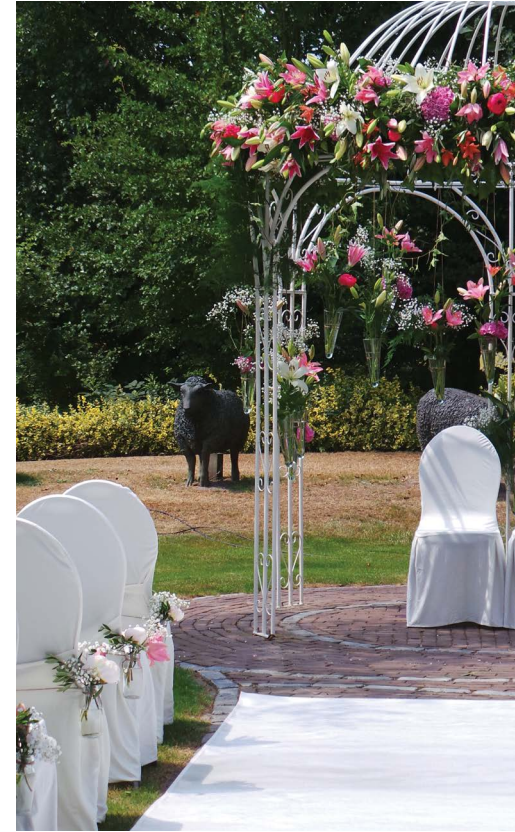




The Grouse







Floral Designer: Astrid Van Der Berg, Van Der Berg Greenhouse.

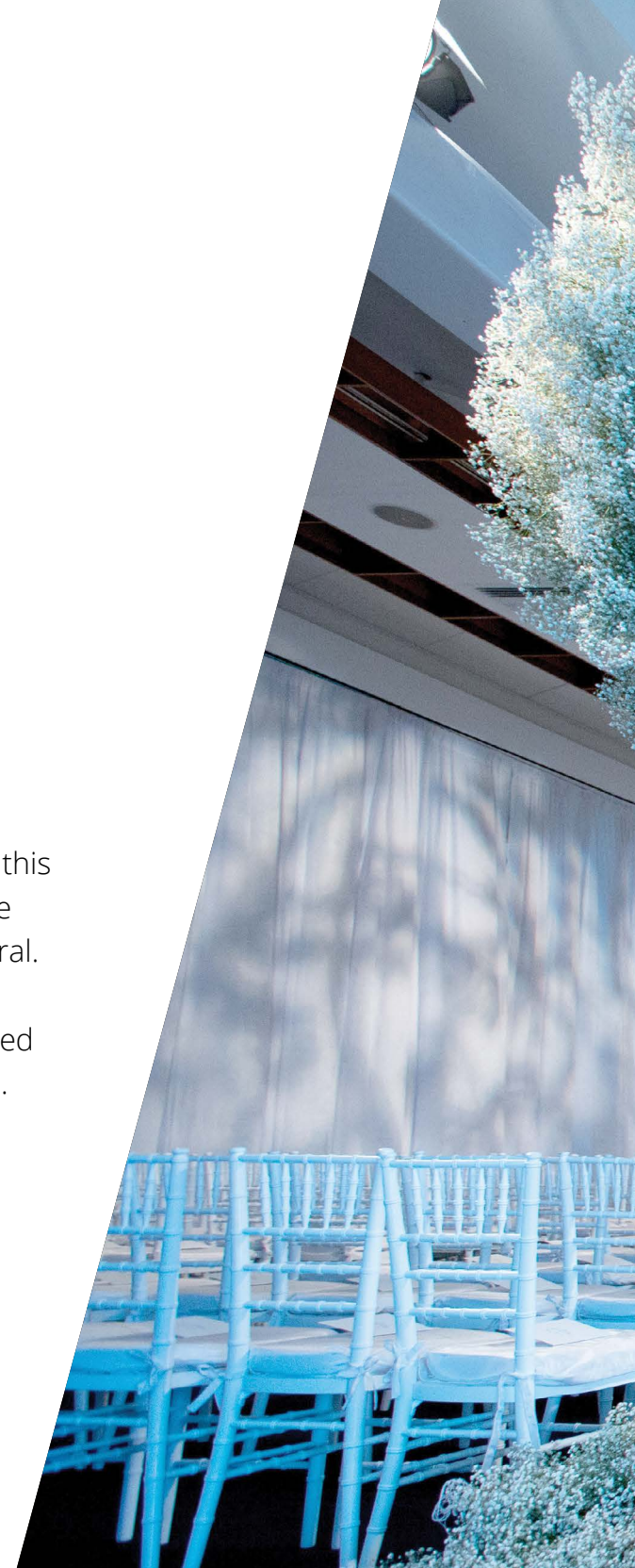


NEW YORK

Creating a pastoral heaven in the city of dreams

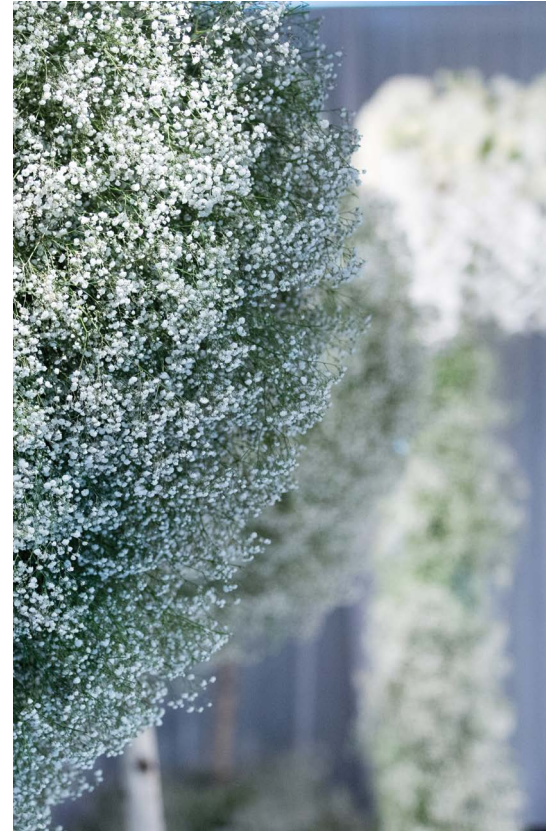
Weddings in the Big Apple are famous for their razzmatazz. But for this New York wedding ceremony, the floral designer has decided to use Gypsophila to create something altogether more serene and pastoral. Stepping out from the bustling New York streets into the wedding venue, guests find themselves in a wintry wood-like setting composed of silver birch trees with abundant brilliant white Gypsophila foliage.

The floors of the aisles are lined with pure white Gypsophila to enhance the feeling of being in nature. The Gypsophila flows all the way to the wedding canopy whose pillars are decked in Gypsophila. The overall effect is romantic, dreamy and simply unforgettable.









Floral Designer: Baruch Nutovitz. **Photographer:** Ronen Boidek. **production:** Design & Production by kbydesigns.



Mishmar Hashiva 5029700, P.O.Box 186, Israel
Tel: +972-3-9602525, Fax: +972-3-9605896
www.danzigeronline.com | 